

May 2013

ELLICOTTVILLE CENTRAL SCHOOL

Volume 43 Issue 7



NHS members (front, l-r): Emily Uhrinek, Elizabeth Wendel, Ashley Charlesworth, Isabella Brown, Gwendolyn Brown; and (back, l-r) Alyssa Costello, Sierra DeChane, Megan Westfall, Emily Timkey, Sarah Wojtowicz, Fletcher Macomb, Courtney Antholzner, John Alzate, Alijah Fox and McKenzie Robinson.

Congratulations Honor Society Members!



NTHS members (l-r) Courtney Bradley, Alyssa Costello and Kate Seiflin with ECS Principal Bob Miller.

On Monday, March 25, 2013, the Ellicottville Central School chapter of the National Honor Society welcomed its newest members (*see photo above*). The NHS induction ceremony took place at the Great Valley Fire Hall and included a candle-lighting ceremony, during which, inductees took a pledge to uphold the four pillars of the National Honor Society: scholarship, leadership, character, and service.

On March 14, 2013, the Ellicottville Career and Technical Center BOCES inducted twelve students from component districts into the National Technical Honor Society (NTHS). The new inductees included three ECS students (*see photo at left*). The National Technical Honor Society membership is based on academic and technical scholarship, skill, attendance, leadership and citizenship.

Please turn to
**Detailed 2013-14
Budget Bulletin**
Starting on page 3

Budget Hearing
Tuesday, May 14, 2013
7:30 p.m.
High School Cafeteria

**Budget Vote & Board
Member Election**
Tuesday, May 21, 2013
1-8 p.m., Elementary Foyer



Behind the Scenes of 'Bye Bye Birdie'



Students who helped make the production of "Bye Bye Birdie" a success by serving on the crew included: Shelby Spell, Brenna Cole, Caitlyn Golley, Becca Hagon, Alexis Woodin, Shelby Swalcy and Lindsey Robinson.



Speaker/Author Justin Lookadoo at ECS on May 24

Presentations Focus on Character Building, Leadership & Bullying

On Friday, May 24, 2013, students in grades 5-9 (3 separate presentations) will have the opportunity to listen to a National Speaker and Best Selling Author. As a pre-med student, Mr. Lookadoo studied the effects that drugs and alcohol have on the brain. Now as a speaker, he utilizes that knowledge as well as his experience working as a Juvenile Probation Officer Crime Prevention Specialist for six years.

He wants every student to make a change in their lives so they can "live with no regrets." Instead of making bad decisions that they will later regret in life, he wants students to think about how their choices will affect them and make deci-

sions they can be proud of.

Students are faced with many pressures and negative influences while growing up and they must have a strong internal compass to overcome the challenges they will face. That compass is truly their **character**. We want to encourage students to do the right thing.

Leadership is also part of the picture and the belief is that every student has the potential to be a leader. Leadership greatly impacts self esteem and provides the students with the skills to express themselves and discuss issues that are important to them. After parents, peers have the most influence on a teen's life.

Mr. Lookadoo will also talk about **bullying** and how to avoid being a target while helping others to stand up for bullying victims. We want students to be aware of their actions and those around them

and work to eliminate it from our school. Bullying comes in many shapes and forms including, but not limited to, the following examples: pushing, shoving, hitting, harassment, sexist or racist comments, name calling, taunting, spreading rumors, pranks or mean jokes.

We are very pleased to bring this dynamic speaker to our school to work with our students and staff on three topics that will influence, mold and shape the future of every ECS student.

In addition, we are expanding the Second Step Program into grades 7 and 8 (already used in K-6). Second Step teaches empathy, communication, emotion-management, coping skills, and decision making. These skills help students stay engaged in school, make good choices, set goals, and avoid peer pressure, substance abuse, bullying, and cyber bullying.



Ellicottville Central School

BUDGET BULLETIN

2013-2014

May 2013



2013-2014 Budget Highlights Include Investments in Technology & Curriculum

By Mark J. Ward, Superintendent

The Board of Education and administration have spent nearly four months developing a sound spending plan for District voters to consider. With the increasing costs associated with operating a school, we are constantly looking at ways to strike a balance between needs and affordability. We have worked very hard to maintain programs, provide opportunities and support the educational needs of our students.

The District has invested a great deal of "resources" in upgrades involving technology throughout the school building. We have replaced fifteen year old wiring and equipment throughout the building and have created a wireless learning environment for our students. Upwards of 150 new computers will be purchased that will meet the new standards required for testing in NYS. Additional funds are being used to buy textbooks, learning materials and curriculum work as we begin to fully implement new Core Curriculum.

BUDGET HIGHLIGHTS:

- The District will spend over \$144,000 during the next five years to replace all student and Library desktops with DELL Latitude 3330 notebooks (roughly 115 units). Since New York is involved with the Partnership for the Assessment of Readiness for College and Careers (PARCC), the District is required to come up with a way to have multi-use computers for online assessments. Due to their size, the DELL latitude notebooks, can be set up in the gymnasium, cafeteria or in large instruction areas for group testing that will be administered over the Districts wireless network.
- Both HS computer labs will be replaced (one with regular DELL desktops and one with the new notebooks discussed earlier).
- We are also updating staff computers, most of which have reached their end of life period (5 years or older).
- A separate proposition (#2) will request the approval to lease two 66 passenger buses for a period of five (5) years at a cost of \$31,000 each year.
- \$60,000 will be budgeted to address the purchase of materials and training related to the implementation of the Core Curriculum.
- Due to the assistance of e-rate funding (the first that ECS ever received!) the District has installed new routers, switches and wiring to upgrade our delivery of technology. This project also created a wireless network throughout the building. This \$220,000 project will be paid for over the next five (5) years with \$140,000 covered by e-rate funds and BOCES aid.

(continued on next page)



BUDGET HEARING

Tuesday,
May 14, 2013
7:30 p.m.
H.S. Cafeteria



BUDGET VOTE & BOARD MEMBER ELECTION

Tuesday, May 21, 2013
1 - 8 p.m.
Elementary Foyer



2013-2014 Budget Highlights, *(continued)*

- Elimination of one 7-12 English position (based on a retirement).
- Reconfiguration of the Maintenance and Transportation Departments resulting in the elimination of one position.
- The District will maintain all extracurricular activities, academic competition and interscholastic sports.
- We will continue to provide field trip offerings for our students.
- We are currently working with JCC and Syracuse University in an effort to expand college-level courses for our students.

The budget before you represents a 2.3% increase in spending, while the tax levy will increase by roughly 3.9%. The spending plan is "under the cap" established by the State, and, therefore, will require a simple majority vote to approve. Of the \$249,000 increase in spending, \$210,000 is budgeted for mandated employee retirement costs. This alone amounts to 3.5% of the projected tax increase.

Over the past four (4) years we have worked tirelessly to maintain the quality education associated with the Ellicottville Central School. This has not been easy given the decrease in State aid that we have absorbed during this period of time. In fact, we actually received more state aid in 2005-06 than we will in 2013-14! With the increases in wages, health insurance, retirement, energy and everything else; it is more and more difficult to maintain what we have.

We have continued to "right size" the operation and reduce costs wherever we can, blended with modest tax increases that averaged only 1.2% over the past four years. During this same period of time, we have used District reserves to reduce the impact on the taxpayers while maintaining the critical educational opportunities our students need to be career or college ready. The children only pass through our school one time and we believe that, as a community, it is our duty to provide our children with the skills, tools and opportunities they will need for a successful future.

We encourage you to review the budget, and, if you have any questions, do not hesitate to contact Mr. Ward, at 699-2368 or mward@eville.wnyric.org. A detailed presentation of the budget will be held on Tuesday, May 14, at 7:30 p.m.

GAP Elimination Adjustment = \$1,152,304 Aid Loss

The GEA law was introduced for the 2010-11 fiscal year as a way to help close New York's then \$10 billion budget deficit. Under the legislation, a portion of the funding shortfall at the state level is divided among all school districts throughout the state and reflected as a reduction in school district state aid. The GEA is a negative number, money that is deducted from the aid originally projected for the district based on the state's aid formula. Therefore, if you add up the numbers over the past three (3) years, Ellicottville Central School has lost \$1,306,098 in state aid.

The Federal government did step in and provide the states with additional revenue (American Recovery and Reinvestment Act-ARRA). ECS received \$444,574 that we used in 2010-11 and 2011-12 to lessen the impact but going into the fourth year of the GAP elimination we will have faced a loss of \$1,152,304 in state aid!

Facing this major reduction in aid, we have had to take a variety of steps over the past five years to reduce expenses, trim staff, streamline operations, consolidated functions and delay the pur-

Four Years of State Aid Loss

2010-11	- \$462,531	12.4% (of state aid received)
2011-12	- \$424,825	12.7% (of state aid received)
2010-12	+ \$444,474	(AARA Funds)
2012-13	- \$418,742	12.6% (of state aid received)
2013-14	- \$418,742	
	<u>+ \$128,062</u>	(GEA restoration)

Total \$1,152,304

chase of equipment and supplies. In fact, the 2013-14 proposed budget is only \$181,000 more than the 2008-09 budget which represents less than a 2% increase...FIVE years later!!



Ellicottville Central School

SUMMARY OF ESTIMATED REVENUES

	2012-13	2013-14
Payment in Lieu of Taxes	14,482.00	15,987.00
Interst & Interest/Penalties on Real Prop	20,600.00	20,000.00
Non-District Tuition	52,000.00	52,000.00
Other Student Related Fees/Charges	100.00	100.00
Rental of Real Property	90,250.00	90,250.00
Foundation Aid	2,617,561.00	2,625,413.00
Excess Aid Costs	44,899.00	50,298.00
Transportation Aid	278,355.00	275,839.00
Building Aid	436,620.00	436,620.00
GAP Elimination	(418,742.00)	(290,680.00)
BOCES & Special Services	455,286.00	484,272.00
Tuition for Students w/ Disabilities	269,541.00	223,834.00
Textbook, Library, & Software	35,857.00	39,203.00
Other State Aid- REAP	32,000.00	32,000.00
Federal Medicaid Reimbursement	16,659.00	12,000.00
Total Federal, State & Local Funding	3,945,468.00	4,067,136.00
Additional Funding		
Appropriated Fund Balance	582,512.00	597,436.00
E-rate Refund	18,000.00	
Reserves	400,000.00	
Real Property Tax Levy	5,990,869.00	6,226,935.00
Total Projected Basic Budget Revenues	10,641,795.00	10,891,507.00
Appropriation for Public Library	28,000.00	28,500.00
Bus Lease	16,350.00	31,000.00
Total Budget Revenues	10,686,145.00	10,951,007.00
Total tax Levy (Including all Propositions)	6,035,219.00	6,286,435.00

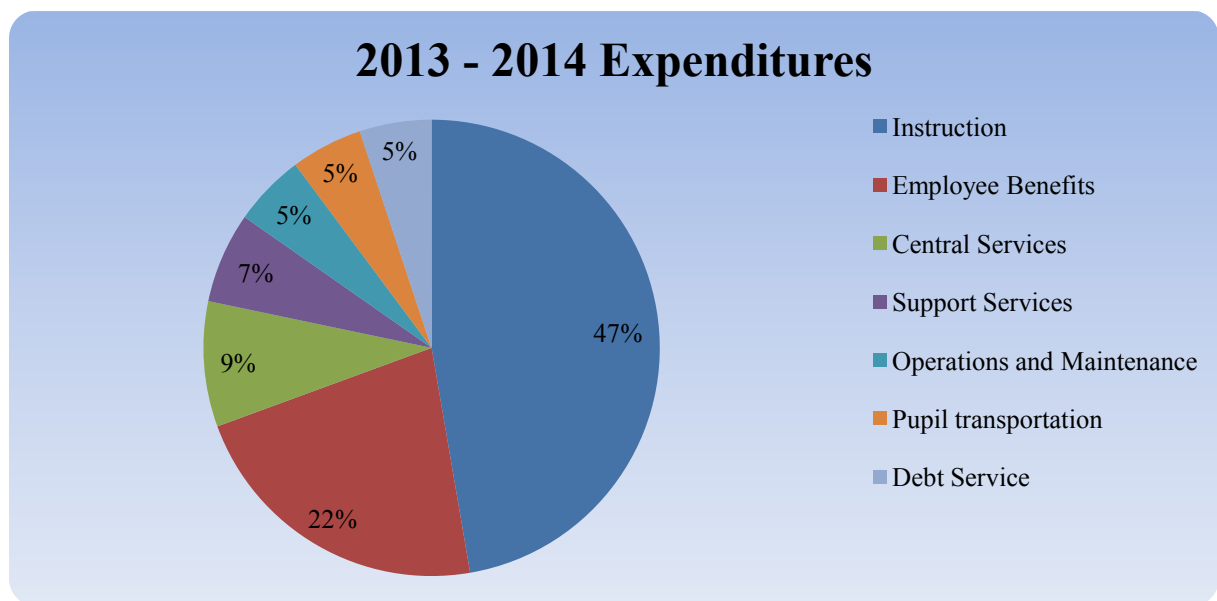


Proposed Budget 2013-2014

SUMMARY OF ESTIMATED EXPENDITURES

Expenditures are explained in greater detail on the following pages.

	2012/13	2013/14
Instruction	\$5,070,696	\$5,137,295
Employee Benefits	2,260,111	2,401,303
Central Services	920,741	964,647
Support Services	681,614	697,947
Operations and Maintenance	602,414	554,195
Pupil Transportation	542,052	552,315
Debt Service	554,167	553,805
Interfund Transfer	10,000	30,000
Total Proposed Expenditures	\$10,641,795	\$10,891,507



PROPOSITIONS (Voted as separate lines)		2012/13	2013/14
Proposition 1	Basic Budget	\$10,641,795	\$10,891,507
Proposition 2	Public Library	28,000	28,500
Proposition 3	Bus Lease	16,350	31,000
TOTAL BUDGET EXPENDITURES		\$10,686,145	\$10,951,007



BUDGET DETAILS

BOCES EXPENSE

The total of budgeted services to be purchased from BOCES is \$2,113,518. This amount is included in the Expenditure Summary above. BOCES costs are blended throughout the budget under instruction, instructional support services, and central services. A portion of these expenditures will be aidable at our BOCES aid ratio of 36%. By sharing costs with other school districts through BOCES, it allows us to offer programs and learning opportunities to our students that are more cost effective.

INSTRUCTION

48% of the total budget is directly related to the teaching and learning process. Salaries for teachers and support staff, classroom equipment and supplies, textbooks and special education are included in this section of the budget.

	2012/13	2013/14
Teaching - Regular Day School	\$3,043,037	\$3,078,544
Includes salaries for teachers and support staff, classroom equipment and supplies, conferences and textbooks.		
Handicapped Students	1,077,769	1,191,747
Provides for BOCES special education classes and related services for the Committee on Special Education.		
Curriculum Development	2,815	17,628
BOCES/Occupational Education	589,003	481,999
BOCES aidable shared service teachers, support services and Career and Technical Educational Programs.		
Supervision/Staff Development	351,972	357,577
Salaries for administration and clerical staff, expenses related to instructional improvement.		
Summer School	6,100	9,800
Driver Education		
Total Instruction	\$5,070,696	\$5,137,295

DEBT SERVICE

The District is currently paying for the Middle School addition, High School renovations and the boiler replacement. All of the projects continue to receive 65% State Aid on the Debt Service each year. These school improvements will be paid for in 2020.

	2012/13	2013/14
Total Debt Service	\$554,167	\$553,805



INSTRUCTIONAL SUPPORT SERVICES

This area of the budget is designed to provide our students with a variety of support services that will enhance their educational experiences. 6% of the total budget is reflected in the services and student opportunities listed below. These are very important to the academic, physical, emotional and psychological development of our students.

	2012/13	2013/14
Guidance Services	\$148,508	\$153,009
Includes salaries and other costs for our guidance program		
Library/AV	44,937	34,141
Covers cost of operating the elementary and high school libraries. This includes books, magazines, and audio visual equipment.		
Computer/Technology/CAI/Networking	141,516	180,434
Costs associated with technology, supplies, software and support staff. Also includes BOCES costs associated with the network, broadband and distance learning. 2-New IPAs		
Health Services	64,830	56,503
Includes salary of the nurse, school doctor, supplies and other costs associated with the health office.		
Psychological Services	61,368	62,951
BOCES shared-service school psychologist, student testing expenses and supplies.		
Extra-curricular Activities	30,051	30,026
Salaries of advisors and expenses for student activity groups such as Student Council, Language Club, etc.		
Interscholastic Athletics	190,404	180,883
Includes coaching salaries, officials fees, equipment & supplies for all sports programs.		
Total Support Services	\$681,614	\$697,947



CENTRAL SERVICES

This area of the budget provides the funds for the business and management operations of the district. Included are salaries of administrative and clerical personnel. Insurance, legal, auditing, mailing, financial, data processing, and public information services are also included. 9% of the overall budget is contained within this budget function. A large percentage of the BOCES costs are aidable at 36.1% (for every dollar spent we receive 36 cents back in aid the following year).

	2012/13	2013/14
Board of Education/District Clerk/Meetings	\$14,500	\$14,500
Superintendent's Office	183,567	187,043
Administrative and clerical salaries, supplies and expenses.		
Business Office/Audit/Tax Collection	186,899	171,901
Administrative and clerical salaries, supplies & equipment as well as contractual expenses for auditing, printing and mailing tax bills.		
Public Information/Printing/Mailing	74,750	72,169
Includes costs of all printing, duplication, student agendas, postage and the District Newsletter.		
Legal/Insurance/Dues/Misc.	90,800	90,800
Legal counsel, all property, student accident, and liability insurance, as well as dues and membership fees for required professional affiliations.		
Property Tax Refunds	3,500	3,500
Refunds mandated by the Real Property Tax Office due to assessment changes.		
BOCES Administrative Charges	366,725	424,734
The costs of BOCES salaries, building maintenance, debt service and administration of group insurance plans through BOCES. Also included are on-line charges and support for network services.		
Total Central Services	\$920,741	\$964,647



EMPLOYEE BENEFITS

The items listed below comprise 22% of the budget and are either prescribed by law or have been negotiated with employee bargaining units. As a public school system, retirement benefits to all employees are mandated, as well as Social Security and Workers' Compensation.

	2012/13	2013/14
NYS Employees' Retirement System	\$206,941	\$219,254
NYS Teachers' Retirement System	414,772	612,853
Social Security	489,208	443,200
Unemployment Insurance	21,066	21,066
Health Insurance	1,078,650	1,050,510
Workers' Compensation	49,474	54,420
Total Employee Benefits	\$2,260,111	\$2,401,303

TRANSPORTATION

The district expends 5% of the total budget to provide regular daily transportation for our students as well as for those attending various special education programs, in Salamanca, Olean, and Randolph, CTE Programs at the BOCES North Center and non-public school transportation.

	2012/13	2013/14
Salaries	\$290,403	\$304,738
Salaries for all bus drivers and mechanics.		
Equipment	17,000	19,757
Insurance/Utilities/Contractual	74,988	60,020
Insurance for vehicles and utility expenses for the bus garage.		
Contract Transportation	20,000	20,000
Supplies	44,661	45,500
Includes parts for repairs and supplies for bus garage maintenance.		
Fuel/Oil/Tires	95,000	102,300
Total Transportation	\$542,052	\$552,315

OPERATIONS AND MAINTENANCE

This part of the budget supports the maintenance of all district facilities, athletic fields and other outdoor areas 6% of the budget is committed to staff salaries, utility costs, contractual services, supplies and materials for general maintenance and repair of equipment and facilities.

	2012/13	2013/14
Salaries	\$263,146	\$238,385
Equipment	24,208	7,600
Contract Expenses/Repairs	55,350	52,200
Supplies	62,710	59,010
Utilities	197,000	197,000
Total Operations & Maintenance	\$602,414	\$554,195



ECS 2013-2014 Proposed Budget

	Budget Components			2012-2013	2013-2014	Inc (Dec) \$
	Administrative	Capital	Instructional	Total	Total	
GENERAL SUPPORT						
Board of Education	\$14,500			\$14,500	\$14,500	\$0
Central Administration	187,043			183,567	\$187,043	\$3,476
Finance	171,901			186,899	\$171,901	(\$14,998)
Legal/Personnel/Public Info	152,218			104,334	\$152,218	\$47,884
Central Services-Operation of Plant	211,113	\$554,195		799,900	\$765,308	(\$34,592)
Central Printing	23,833			23,340	\$23,833	\$493
Insurance/Refunds/Dues/Unclassified	70,800	3,500		74,300	\$74,300	\$0
BOCES Central Data/Admin/Capital	129,739			136,315	\$129,739	(\$6,576)
TOTAL GENERAL SUPPORT	\$961,147	\$557,695	\$0	\$1,523,155	\$1,518,842	-\$4,313
INSTRUCTIONAL SUPPORT						
Curriculum/Supervision/Inservice	\$290,087			\$269,951	\$290,087	\$20,136
Staff Development			\$85,118	84,836	\$85,118	\$282
Instructional Program-Teaching			4,762,090	4,715,909	\$4,762,090	\$46,181
Instructional Program - Media/Tech			214,575	186,453	\$214,575	\$28,122
Guidance/Health/Psychological			272,463	274,706	\$272,463	(\$2,243)
Co-Curricular/Interscholastic Activities			210,909	220,455	\$210,909	(\$9,546)
TOTAL INSTRUCTIONAL SUPPORT	\$290,087	\$0	\$5,545,155	\$5,752,310	\$5,835,242	\$82,932
STUDENT TRANSPORTATION						
District Transportation		2,000	\$533,965	\$542,052	\$535,965	(\$6,087)
Installment Purchase- Bus		16,350			\$16,350	
TOTAL STUDENT TRANSPORTATION	\$0	\$18,350	\$533,965	\$542,052	\$552,315	-\$6,087
EMPLOYEE BENEFITS						
NYS Teacher Retirement System	\$59,963		\$552,890	\$414,772	\$612,853	\$198,081
NYS Employee Retirement System	36,371	\$43,953	138,930	206,941	\$219,254	\$12,313
Social Security	42,141	16,812	384,247	489,209	\$443,200	(\$46,009)
Worker's Compensation	6,460	17,150	30,810	49,474	\$54,420	\$4,946
Unemployment Insurance	1,500	900	18,666	21,066	\$21,066	\$0
Health Benefits	88,485	52,480	909,545	1,078,650	\$1,050,510	(\$28,140)
TOTAL EMPLOYEE BENEFITS	\$234,920	\$131,295	\$2,035,088	\$2,260,112	\$2,401,303	\$141,191
TRANSFER TO OTHER FUNDS			30000	\$10,000	\$30,000	\$20,000
TOTAL TRANSFER TO OTHER FUNDS	\$0	\$0	\$30,000	\$10,000	\$30,000	\$20,000
DEBT SERVICE						
MS/HS renovation & construction		\$515,232		\$514,482	\$515,232	\$750
Boilers Interest & Principal		38,573		39,685	\$38,573	(\$1,112)
TOTAL DEBT SERVICE		\$553,805		\$554,167	\$553,805	(\$362)
TOTAL PROPOSED BUDGET	\$1,486,154	\$1,261,145	\$8,174,208	\$10,641,796	\$10,891,507	\$233,361

Explanation of Three Part Budget Presentation

Chapter 436 of the Laws of 1997 require public school boards of education to present the proposed budget in three parts. As a result, this presentation is organized around the following components; administrative, capital, and program:

Administrative Component: Includes expenses associated with the operation of the school board, superintendent's office, and business office. Includes salaries and benefits for all certified administrators and supervisors who spend a majority of their time performing administrative duties, consulting costs not directly related to instructional programs, and all other activities that are administrative in nature.

Capital Component: Includes debt service for all facilities financed by bonds and notes of the district, lease expenditures, costs resulting from judgements in tax certiorari proceedings, awards from court judgements, administrative orders and settled claims, cost of construction, acquisition, reconstruction, rehabilitation, and improvements of school buildings, all expenses associated with custodial and maintenance salaries and benefits, service contracts, supplies, utilities, maintenance, and repair of school facilities.

Program Component: Includes salaries and benefits of teachers and any school administrator or supervisor who spend a majority of their time performing teaching duties, and all transportation operating expenses.



Four Candidates Vying for School Board Seats

Melissa Foster is a lifelong resident of Ellicottville Central School District. She lives in Great Valley with her husband, Kenny, and sons, Nicholas and Lucas, who attend ECS.

Melissa is employed by the NYS OPWDD as the Affirmative Action Officer for the agency. For two years prior, she was a Program Coordinator in the Integrated Employment Services Program, which provides employment training and employment opportunities for people who have developmental disabilities. Melissa also was employed at a NYS residential program in Great Valley for teenage boys as an English / Reading Teacher and Education Coordinator. She worked regularly with NYSED Regulations and GED Regulations to plan the education programs, while providing positive education opportunities for the youth in the program.

Melissa brings strong academic qualifications to the board with a bachelor's degree in Elementary Education from SUNY Geneseo, a Reading Masters/Certification from Indiana University of Pennsylvania, and an Education Administration Masters/Certification from Niagara University. Her training has provided her with knowledge about education trends and student needs.

Melissa has been active for many years as a member and past president of the ECS PTO, working with others to rejuvenate the Parent/Teacher group. She is a member of the: Great Valley Volunteer Fire Department; Great Valley Regatta committee since 1992; Cattaraugus County Youth Bureau Board; and past member of the Ellicottville/Great Valley Ambulance Service. Melissa participated in the Strategic Planning Committee in 2009 and is involved in the current Building Project Planning Committee.

Melissa hopes to be given the opportunity to share her love of education and be part of ensuring a bright future for the children who attend ECS!!

My name is **Roger Spell** and I am running for the Ellicottville Central School Board of Education (BOE). I have served 6 years on the BOE, last year as Vice-President and this year as President. I live in the village of Ellicottville with my wife Mary, daughter Shelby who is in the 9th grade, and son Robert who is in the 8th grade. As a co-owner of The Barn Restaurant I can see how important the school is to local business owners and parents alike. I have been active in the community, working with the Ellicottville Pee Wee Football program for the last six years, helping coach the ECS boys modified basketball team for the last two years and coaching three years for the elementary basketball program. I have been very fortunate in my six years on the school board to work with very talented and dedicated administrators and teaching staff. These dedicated professionals have consistently placed ECS as one of the top performing academic schools in Western NY. Small school districts like ECS are facing tough times and the BOE and administration will have to make some tough decisions on the direction the district will be taking in the future. With the support of the parents, grandparents and the community



Melissa Foster



Roger Spell

the district will continue to excel now and in the future.

Leonard (Len) Zlockie is pleased to announce his candidacy for one of the vacant seats on the Board of Education of Ellicottville Central School.

Len is married to Judy Zlockie and resides in Great Valley on Fairview Lane. He was born in Pottstown, PA and was raised in Olean NY. He graduated from Olean High School in 1978, JCC in 1980 and attended St. Bonaventure University. They have two children, Luke, ECS Class of 2013, and Morgan, Class of 2016.

Len works for the City of Salamanca Board of Public Utilities. He has been employed by the BPU for 21+ years. He is currently a member of Our Lady of Peace Parish in Salamanca, co-teaches 2nd-grade CCD class with his wife, and is a member of the Sports Booster Club. In addition, he was a coach for ECLV Baseball for 3 years, served on the Strategic Planning Committee, and was former BPU Union President for 6 years.

As a parent and a taxpayer, I believe a balance can be achieved in keeping our taxes reasonable and providing a quality education for our children, now and in the future. Thank you for your consideration on election day.

William (Bill) Murphy: For those of you who don't know me, I am a graduate of ECS, Class of 1983, and son of John and Joanne Murphy. John Murphy was the Ellicottville Chief of Police for 20+ years, serving the community in that capacity and others. Due to his example, I would like to continue this tradition and announce my candidacy for the Board of Education at Ellicottville Central School.

A lifelong resident of Ellicottville, I currently reside on Route 219 in Ellicottville with my wife of 24 years, Stephanie; our daughter, Niki, a 2009 ECS graduate; and our two sons, Alex and Wil, both of whom are seniors and looking forward to graduating in June.

For the past 28 years, I have worked for two manufacturing companies, Stride Tool and Horschel Brothers Precision. During the final several years at Stride Tool and currently with HBP, my daily activities concentrate on cost accounting, job costing and inventory management. Therefore, I hope to bring my analytical skills and knowledge to the table on the Board of Education.

I am an Exempt Member of the Ellicottville Fire Department; Past-Assistant Pack Leader (Cub Scouts) for four years; Current Assistant Troup Leader (Boy Scouts) for four years; and Current Merit Badge Counselor for Boy Scouts.

As a parent, I have seen the challenges associated with providing a quality education to all children including those with special needs. Our oldest son Alex was diagnosed at a young age with Aspergers Syndrome which falls in the "Autism Spectrum Disorders." He graduates this year, thanks to all of the programs in place.

I would like to ask for your vote in the upcoming election so I can add my voice to servicing the school district and community.



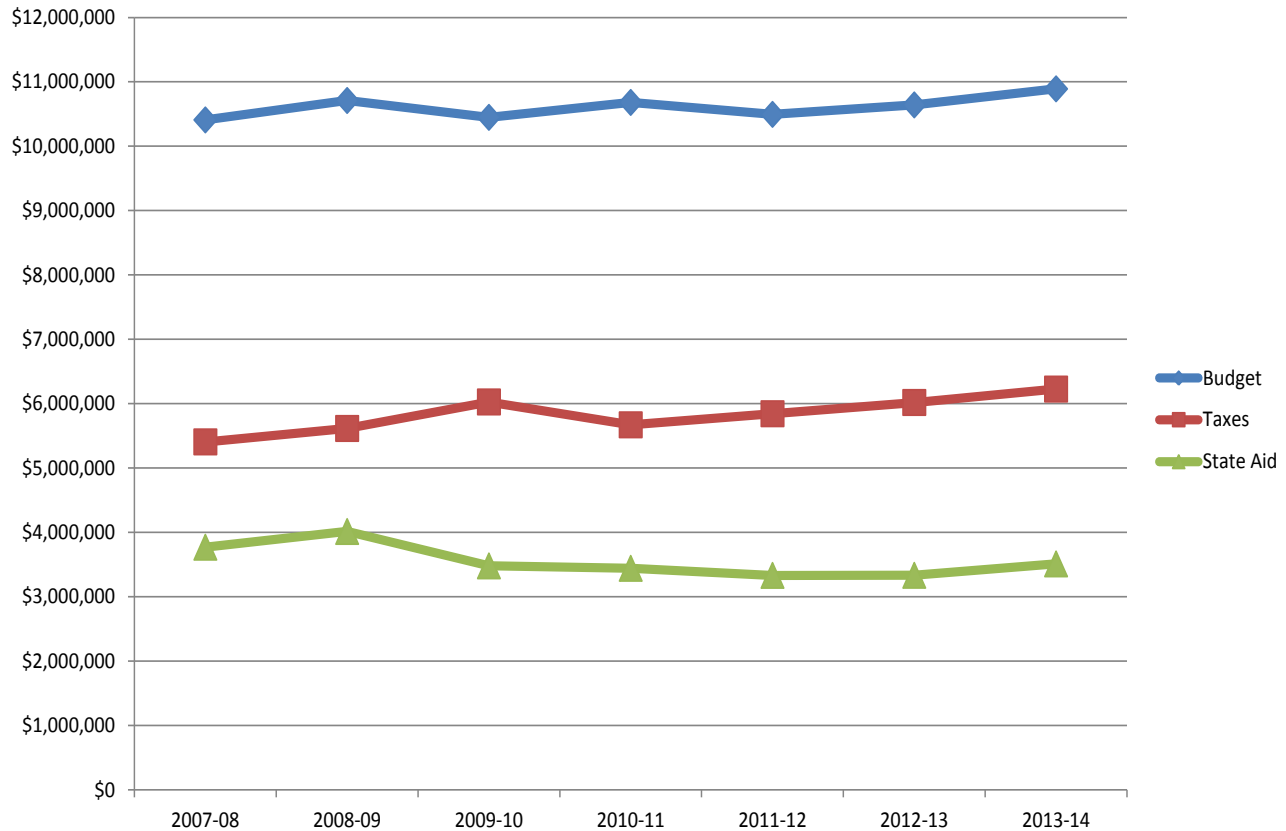
Leonard Zlockie



William Murphy



ECS Budget History - 2007-2014



BASIC BUDGET - Proposition #1

Resolved: That the Board of Education of the Ellicottville Central School District in the County of Cattaraugus, State of New York, **BE AND IS HEREBY AUTHORIZED TO EXPEND THE SUM OF \$10,891,507** for the 2013/2014 school year budget. *The Basic Budget will provide funds for all of the educationally related services and the maintenance of our school building.*

SCHOOL BUS LEASE - Proposition #2

Resolved: This proposition will authorize the Board of Education of the Ellicottville Central School District in the County of Cattaraugus, State of New York, **to levy an additional \$31,000 to lease 2 (66 passenger) 2014 International School Buses for each of the next five years commencing with the 2013/2014 school year.**

ELLCOTTVILLE MEMORIAL LIBRARY - Proposition #3

Resolved: That the Board of Education of the Ellicottville Central School District in the County of Cattaraugus, State of New York, **BE AND IS HEREBY AUTHORIZED TO EXPEND THE SUM OF \$28,500** in tax money to support the Ellicottville Memorial Library.

BOARD MEMBER ELECTION VOTING

Ellicottville Central School Board of Education Member Election May 21, 2013: The candidates receiving the two highest numbers of votes will each serve a five-year term, beginning on July 1, 2013 and expiring on June 30, 2018. The candidate with the third highest number of votes will serve a four-year term to fill out the remainder of the term left vacated by the resignation of Mrs. Aimee Kilby (May 21, 2013-June 30, 2017).

Vote for **THREE (3)** (Please check):

_____ Melissa Foster	_____ Leonard (Len) Zlockie	_____ (Write-in Candidate)
_____ Roger Spell	_____ William (Bill) Murphy	



NYS School Report Card Fiscal Accountability Supplement for Ellicottville Central School District

New York State Education Law and the Commissioner's Regulations require the attachment of the NYS School Report Card to the public school district budget proposal. The regulations require that certain expenditure ratios for general education and special education students be reported and compared with ratios for similar districts and all public schools. The required ratios for this district are reported below.

2010-2011 School Year		General Education	Special Education
This School District	Instructional Expenditures	\$6,026,666	\$1,218,914
	Pupils	561	56
	Expenditures Per Pupil	\$10,743	\$21,766
Similar District Group	Instructional Expenditures	\$7,820,663,210	\$3,172,283,304
	Pupils	798,424	110,978
	Expenditures Per Pupil	\$9,795	\$28,585
Total of All School Districts in NY State	Instructional Expenditures	\$29,473,160,406	\$12,260,104,540
	Pupils	2,688,528	412,226
	Expenditures Per Pupil	\$10,963	\$29,741
Similar District Group Description: Average Need/Resource Capacity			

Instructional Expenditures for General Education are K-12 expenditures for classroom instruction (excluding Special Education) plus a proration of building level administrative and instructional support expenditures. These expenditures include amounts for instruction of students with disabilities in a general-education setting. District expenditures, such as transportation, debt service and district-wide administration are not included.

The pupil count for General Education is K-12 average daily membership plus K-12 pupils for whom the district pays tuition to another school district. This number represents all pupils, including those classified as having disabilities and those not classified, excluding only students with disabilities placed out of district. For districts in which a county jail is located, this number includes incarcerated youth to whom the district must provide an education program.

Instructional Expenditures for Special Education are K-12 expenditures for students with disabilities (including summer special education expenditures) plus a proration of building-level administrative and instructional support expenditures. District expenditures, such as transportation, debt service and district-wide administration are not included.

Instructional Expenditures Per Pupil is the simple arithmetic ratio of Instructional Expenditures to Pupils. The total cost of instruction for students with disabilities may include both general- and special-education expenditures. Special-education services provided in the general-education classroom may benefit students not classified as having disabilities.

2010-2011 School Year	This School District	Similar District Group	Total of All School Districts in NY State
Total Expenditures Per Pupil	\$17,386	\$18,876	\$20,410



Third Quarter 5-12 Honor Rolls Listed

HIGH HONORS

Grade 12 - Courtney Bradley, Alyssa Costello, Nicholas DeChane, Rachel McMahon-Eagan, William Murphy, Ciara Peters, Danna Scharf, Alex Steinbroner, Madison Szpaicher, Caitlin Toth, Rachel Welch, Shannon Wilson, Luke Zlockie

Grade 11 - John Alzate-Taimal, Courtney Antholzner, Gwendolyn Brown, Isabella Brown, Ashley Charlesworth, Kayla Dunkleman, Hannah Gerwitz, Fletcher Macomb, Colleen McClure, Chantel Perez, Emily Rinko, McKenzie Robinson, Julia Schwartz, Emily Timkey, Emily Uhrinek, Elizabeth Wendel, Megan Westfall, Jessica Wojtowicz, Sarah Wojtowicz

Grade 10 - Kevin Bower, Alessia Filutze, Rebecca Hagon, Sage Lyford, Patrick McMahon-Eagan, Alex Paddock, Jocelyn Steffan, Hunter Steffenhagen, Shelby Swalcy, Olivia Venezia, Calum Watt, Aidan Wilson, Finn Wilson, Molly Woodarek, Alexis Woodin

Grade 9 - Courtney Charlesworth, Brenna Cole, Hunter Cooper, Elijah DeChane, Thomas Easton, Caitlyn Golley, Jack Haley, Kaleigh Hunt, Cole Lapi, Jaelee Macomb, Cheyenne Maybee, Kathryn Nicholson, Quinn O'Rourke, Max Paddock, Lindsey Robinson, Robert Sawicki Jr., Kaitlyn Smith, Shelby Spell, William Timkey, Shelby Toth, Leah Westfall

Grade 8 - Jenna Aldrich, Katherine Barry, Aaron Blank, Emma Chew, Hannah Chew, Jerrett Gebauer, Marissa Hamilton, Madison Harris, Shelby Imhoff, Noehah Knight, Benjamin Marsh, Jacob Marsh,

Victor Rieman, Tarah Scharf, Robert Spell, Madison Swalcy, Liam Watt

Grade 7 - Rylie Aldrich, Kirkland Kaleta, Lisa Krotz, Kourtney Robinson, Mitchell Sexton, Andelain Wilson, Walter Woodarek

Grade 6 - Meganne Chapman, Brenden Chudy, Elissa Cole, Kayleigh Coolidge, Alana Curtis, Brennan Finn, Lucas Goodin, Griffin Haley, Ned Hartsell, Ginna Hensel, Linnea Jimerson, Samantha Karns, Logan Knab, Zackary Krotz, Cole Light, Sierra Maybee, Gabrielle Squires

HONORS

Grade 12 - Mary Abbinanti, Breanna Coolidge, Grace Hall, Janae Hamilton, Carl Herman, Cheyanne Hurley, Alticiae Kelley, Konnor Sanders, Thomas Schena Kate Seiflein Patrick Snyder

Grade 11 - Ashley Bognar, Jordan Curtis, Dennis Davies III, Alijah Fox, Liam O'Rourke, Michaela Pierce, Kara Piscitelli, Monica Rubeck, Melinda Rust, Courtney Scanlan, Samantha Uhrinek, Cameron Wilson

Grade 10 - Dominic Campbell, Alexander Delity

Grade 9 - Nicholas DiDonato, Alex Fisher, Annmarie Prentice, Caleb Rinko, Jasmine Valentine, Morgan Zlockie

Grade 8 - Haylee Adams, Brooke Coolidge, Nolan Dunkleman, Preston Hutchinson, Jayden Slaughenhaupt, Austin Whitmer

Grade 7 - Griffin Chudy, Christian Colbert, Evelyn Cortez, Zachary Golley, Halie Mowery, Hunter O'Stricker, Janel Stuve, Deni Whitmore

Grade 6 - Audrianna Atkinson, Allyson Fisher, Robin Freaney, Travis Goodin, Jacob Perkins, Steven Rowland, Garland Schumann

GRADE 5 HONOR ROLL

Mrs. Moore - Abbey DeChane, Abaigeal Donoghue, Robert Dungan, Brooke Eddy, Noah Greene, Christian Hutchinson, Simon Lin, Samantha Van Wicklin, Ainsley Watt

Mrs. Fitzpatrick - Adrian de Orbe, Devon Fish, Julianna Giannicchi, Megan Hartsell, Lauren Karns, Madisyn Kilby, Savannah Maclean, Aliya Michael, Cyrene Moore, Jack Snyder

GRADE 5 B.U.G. AWARDS

Mrs. Moore - James Bogue, Jayden Curtis, Abbey DeChane, Abaigeal Donoghue, Robert Dungan, Noah Greene, Ashley Hall, Christian Hutchinson, Heli Kongats, Simon Lin, Liam Long, Jordan Peplinski, Audra Perkins, Megan Stuve, Samantha Van Wicklin, Ainsley Watt

Mrs. Fitzpatrick - Allison Calarco, Monikha Cavana, Adrian de Orbe, Devon Fish, Julianna Giannicchi, Megan Hartsell, Kerstiana Hutchinson, McKenna Kaleta, Lauren Karns, Madisyn Kilby, Niklas Logel, Savannah Maclean, Aliya Michael, Cyrene Moore, Evelyn Nuzzo, Jacob Rust, Jack Snyder, Reena Stuve



Hospitality & Tourism Class Tours New Holiday Valley Lodge

Students in the New Vision Hospitality and Tourism program at the Ellicottville Career and Technical Center toured the new Mardis Gras Lodge with Vice President of Operations Bonnie Koschir. Holiday Valley Resort and Conference Center has opened its doors to these business minded high school students who are able to spend their senior year embedded in the organization, learning what it takes to promote a four-season attraction. Students were also able to experience the slopes and excellent trails and grooming that has made Holiday Valley a favorite of skiers and boarders everywhere. Pictured from ECS is Ashley Wilson (second from left).



Ellicottville Central School
5873 Route 219
Ellicottville, NY 14731
www.eville.wnyric.org

Board Members

Mr. Roger Spell, President
Mrs. Connie Hellwig, Vice President
Mr. Carl Calarco
Mr. Steve Crowley
Mr. Lynn Eddy
Mr. James Wiley

Administration

Mr. Mark J. Ward, Superintendent / Business Administrator
Mr. Robert Miller, 6-12 Principal
Mrs. Connie Poulin, Pre K-5 Principal / CSE-CPSE Chairperson

NON PROFIT
ORGANIZATION

U.S. POSTAGE PAID
Permit No. 1825

Olean, NY 14760

ECRWSS

POSTAL PATRON

Or CURRENT RESIDENT



E - Embracing Change
C - Celebrating Success
S - Surpassing Expectations



ECS Science & Technology Exposition

**Tuesday,
May 21, 2013**

6 p.m., HS Cafeteria

There will be a Kiddie Corner
with hands-on activities
for the little ones.
Earth Science students will
test the egg drop,
and technology students
will be creating a theme park.